

**NAUMI HOTEL AUCKLAND AIRPORT LAUNCHES NEW SUITES  
INSPIRED BY MISSONI AND ARTIST YAYOI KUSAMA**

*Ziggy and Dottie suites embrace the design hotel's eclectic style*



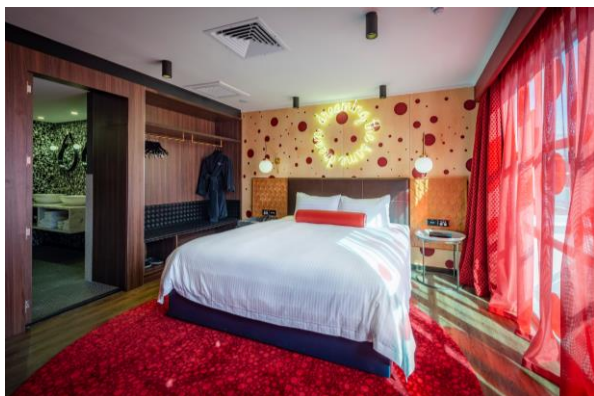
*June 2018.../ June sees the arrival of two new design suites at [Naumi Hotel Auckland Airport](#). A continuation of the hotel's reputation for quirky design, the new Ziggy suite is inspired by Italian fashion house Missoni and the Dottie suite by contemporary artist Yayoi Kusama. Created by interior design duo Material Creative, the stylish one-bedroom suites combine Naumi's passion for art and fashion, complementing the Chanel and Warhol suites at sister property Naumi Hotel Singapore.*



### **Ziggy – inspired by Missoni**

The Ziggy suite was inspired by Missoni’s innovative use of pattern and colour to create their signature print. The team chose to pay tribute to the Italian fashion house by curating a bold design which felt both colourful and playful.

The colour scheme within the Ziggy suite, which includes a neon lit bar and football table, is vibrant and fun with shades of pinks, purple, orange and blue arranged together in a nod to Missoni. The suite includes throws, bed cushions and other soft furnishings created by the design house itself. Colourful pieces from local artists feature throughout, including large works in the lounge area by Evie Kemp and above the bed by Carmel Vanderhoven, the bedroom wallpaper was hand painted by the NY Art Dept in New Zealand. Other items in the suite, which has a large living room, free standing bath and balcony, includes a glass and gold Ikebana vase by Danish design brand Fritz Hansen.



### **Dottie – inspired by Yayoi Kusama**

For the design of the Dottie suite, Naumi Hotel Auckland Airport was inspired by the Japanese contemporary artist Yayoi Kusama, renowned for her installations and sculptures in signature polka dot print, symbolising energy. Naumi references the artist’s bold approach to repetition and colour with dots covering the bedroom walls and bathroom. In addition, the suite has pieces by the artist including original Yayoi Kusama designed handkerchiefs and tea towels framed on the wall.

The suite consists of a large living room, king-sized bedroom, en-suite bathroom, bar counter and balcony. Quirky touches include feather headdresses on the wall and designer rugs in vibrant shades. The Dottie suite has a playful collection of art works from the neon sign above the bed made bespoke by Capitol Signs, Kusama figurines from Auckland Art Gallery and Kusama plates from Third Drawer Down.

Nightly rates at Naumi Hotel Auckland Airport start from NZ\$350 (approx. £178) based on two adults sharing a Habitat Room on a room-only basis.

[www.naumihotels.com](http://www.naumihotels.com)

[@NaumiHotels](https://www.instagram.com/NaumiHotels)

#naumisays

-ends-

Media Enquiries:

**Allison De Cruz**

Marketing Communications Manager

Tel: (65) 6850 7991 Mobile: (65) 9819 5553

[allison@hind.com.sg](mailto:allison@hind.com.sg)

**Jennifer Tay**

PR & Communications

Tel: (65) 6850 7998 Mobile: (65) 8128 2504

[jennifer.tay@hind.com.sg](mailto:jennifer.tay@hind.com.sg)

**About Naumi Hotels**

Naumi Hotels is a Singapore-based private hospitality label synonymous with personal luxury and prime locality. The Group visions to consistently engage today's travellers by reinventing stays with designer aesthetics, luxurious comfort and bespoke experiences. Fuelled by the desire to delight more customers with redefined ultra-luxurious living, Naumi Hotels began with the opening of its flagship hotel, Naumi Hotel Singapore in 2007, which soon built up an enviable reputation for unparalleled attention to detail and impeccable personalised service.